

Beaches Winter Invitational

Hosted by
Fletcher High School



February 20, 2010

Dear Director,

On behalf of Fletcher High School, we would like to thank for you choosing the Beaches Winter Invitational as part of your 2010 winter guard/percussion season.

Enclosed should be all the information you will need in preparation for your trip to our school, including maps to the school, driving directions, campus maps, and other details pertaining to our event.

Please feel free to contact me by e-mail at maerklj@duvalschools.org

We look forward to seeing you on February 20!

Sincerely,

Jonathan Maerkl

Jonathan Maerkl
Director of Bands

Fletcher High School

School Address: Fletcher High School
700 Seagate Ave
Neptune Beach, FL 32266

Date and Time: February 20, 2010
Show begins at 2pm

Tickets: \$10.00 ages 7 and over
Free 7 and under

UNIT CHECK-IN: Performers and seven (7) staff will be admitted at guard check-in. All guard members and staff must be wrist banded when checking in. Additional staff members and chaperones must purchase tickets from the ticket booth. Units must check-in one (1) hours prior to their performance time. If you have any circuit obligations you will be asked to take care of them at that time. Check-in will be open at 12:00pm.

PARKING: Please review the map included in this packet for details on parking at Fletcher High School.

DRESSING FACILITIES: Locker rooms will be open for performers. Please vacate in a timely fashion to allow space for other performing units. Fletcher High School and the Florida Federation of Colorguard Circuit will not be responsible for lost, stolen or damaged property.

FOOTWEAR & EQUIPMENT: All equipment, tips of poles, sabers, and rifles must be properly taped. Any props used must be protected to avoid damage to the gym area. Soft-soled shoes need not extra protection. Hard-soled shoes must be taped. All floor carts and rolling equipment or instruments must have clean working wheels. All equipment must also be removed from the gym immediately following your performance.

INSPECTIONS: Equipment and props will be inspected in the holding area prior to the performance time. Questions regarding your equipment's legality will be determined by the Contest Director and Chief Judge assigned by the FFCC.

FLOOR SIZE: Contest floor will be 55" X 80". We will also have another floor that will be down for added protection throughout the day. If you are bringing your own floor, your floor will have to go over the floor provided.

TABULATING AND JUDGING AREA: Only authorized personnel will be allowed in the tabulation and judging area. **DO NOT APPROACH THE TABULATION AREA AT ANY TIME!** You may pick up your judges commentary CD's at the trophy table approximately 30 minutes after your units performance.

SHOW MUSIC: Show music CD's should be turned in to the sound table at least 30 minutes prior to the unit's performance time. If you are using an MP3 player the circuit can connect it to the sound system, but will not be responsible for its operation. A guard staff member must be present to operate the player.

SOUND CHECKS: Sound check will take place from 1:00pm-2:00pm. After this time, sound checks will only take place during official breaks when the sound technician is available.

WARM-UPS: There will be ample space provided for your unit's preparation for the show. Colorguards will warm-up in the cafeteria. Each guard will be in one area for their entire scheduled warm-up time. We request that you adhere to the rotation schedule to keep the show on schedule. There is also ample outside space for warm-up. However, you will still need to report to the holding area at your designated report time.

AWARDS CEREMONY/RETREAT: We will be having 1 awards ceremony at the conclusion of the contest.

VIDEO TAPING: Each unit will be given a video pass at check-in. This allows one person to video that unit only. Cameras must be hand-held or mounted on a unipod or folded tripod. No other videotaping is allowed.

PHOTOGRAPHY: Photography is allowed, but we do ask that for the comfort and safety of both the performers and the spectators, **NO FLASH PHOTOGRAPHY!!!!**

HAPPY GRAMS: We will have happy grams available for a cost of \$1. The announcer will use discretion when reading happy grams. Inappropriate messages will not be read and no refund will be provided.

USED FLAGS and UNIFORMS: We will be selling a variety of used flags and uniforms at the show. Flag prices will run from \$2 to \$5 each. Uniforms will be \$15 each.

CONCESSION STAND: Our concession stand will be open from 1pm to approximately 7:30pm.

HOSPITALITY ROOMS: There will be separate hospitality rooms for judges and directors. Please stop and enjoy the food and drinks.

CRITIQUE: Critique will be held after the competition for those units which have previously signed up. Critique will be held in the judges hospitality room. The critique schedule is available at the event page on the FFCC website.

EMERGENCY NUMBER: Jonathan Maerkl (Band Director) 904-307-1122
 Rick Krystofiak (Guard Director) 904-327-4484
 Robb Van Eck (Percussion Director) 904-864-4913

(for directors only)

Lainey Drummond (contest director) (205) 215-4248

ADJUDICATION PANEL:

Colorguard

IAE – Robert Hargrove

IAM – Rhonda Hines

EA – Randy Blackburn

GE – David Cook

GE – Bob Peck

TP – George Gulliford

CJ – Rhonda Hines

Percussion

PA – Danny Raymond

Visual – Bruce Jones

GE – Ralph Venezia

TP- George Gulliford

CJ – Bruce Jones

DIRECTIONS TO FLETCHER HIGH SCHOOL –

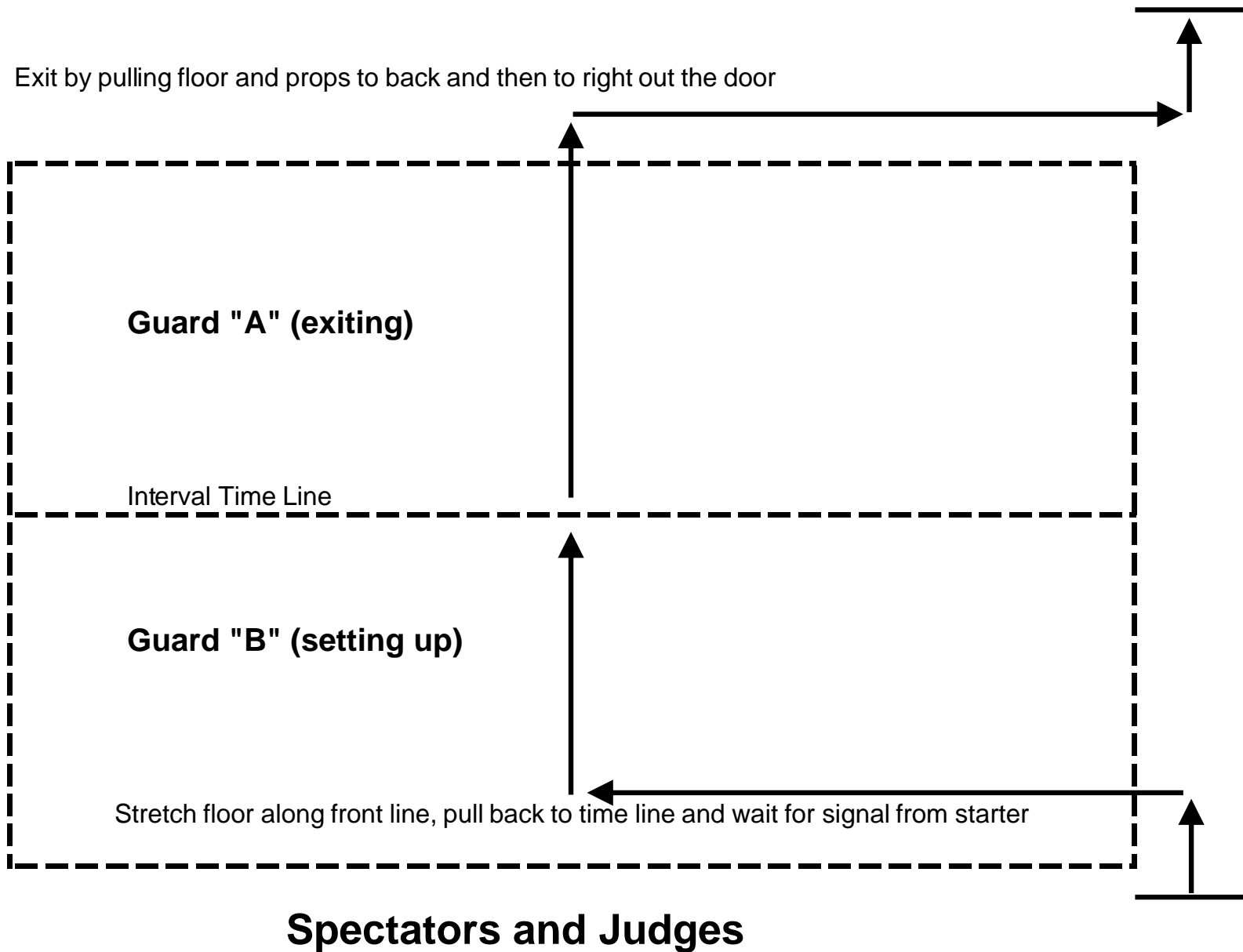
COMING FROM THE SOUTH take I-95 North, then 9A North to Butler Blvd. (SR202)

COMING FROM THE NORTH take I-95 South, then 9A South to Butler Blvd. (SR202)

COMING FROM THE WEST take I-10 East, then I-95 South to Butler Blvd. (SR202)

Once you get to Butler Blvd. head east. Butler will dead end. Stay in the left lane and it will dump you out on A1A (3rd Street) North. Head north past Beach. Blvd. Right after Fletcher Middle School turn left on Seagate Avenue. Head straight, past the front of Fletcher High School. Parking for buses will be on the Drivers Ed Range on the west side of the school. Trailers will also park on that side of the school.

Entrance / Exit procedure for Fletcher



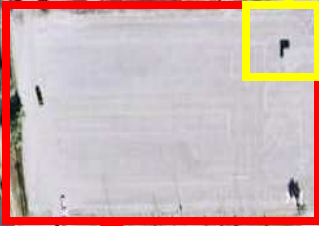


Floor Folding Area



See Next Page for details of warm-up Areas and Gymnasium

Guard/Drumline Check-In



Spectator Parking

Seagate Ave

Bus and Trailer Parking

Eastern D

20th Ave N

2

800

1900

1500

600

Duncan U Fletcher High

My

Ma

A